



MAHATMA GANDHI UNIVERSITY
of
MEDICAL SCIENCES & TECHNOLOGY
JAIPUR



**Any other Relevant
Information**



SCREENSHOTS OF THE MOODLE PLATFORM USED IN MGUMST

This screenshot shows a Moodle assignment page. The browser address bar indicates the URL is 203.190.149.100/moodle/mod/assign/view.php?id=193. The page title is 'long answer questions on BLOOD'. On the left, a navigation menu lists various site and course elements, with 'long answer questions on BLOOD' highlighted. The main content area, titled 'LAQ', contains a list of four questions with their respective marks:

Question	Marks
1. What are Plasma Proteins.	2
Describe the function of plasma proteins in detail.	4
Add a note on Albumin Globulin ratio.	3
2. What is erythropoiesis?	2
Describe the stages of erythropoiesis.	3
Discuss the factors affecting erythropoiesis.	4
3. Enumerate the White blood cells with diagrams.	4
Describe the leucopoiesis in detail.	5
4. Enumerate the various blood group systems.	2
Discuss the ABO blood group system in detail.	4

The bottom of the page shows a Windows taskbar with the date 02-07-2021 and time 16:06.

This screenshot shows the MGUMST Moodle homepage. The browser address bar indicates the URL is 203.190.149.100/moodle/?redirect=0. The page title is 'MGUMST Moodle'. The main content area features a 'Course categories' section with a 'Collapse all' button. The categories listed are:

- Health Informatics & Telemedicine (2)
- M.D (5)
- M.B.B.S (19)
 - Psychiatry (Batch 2018-19)
- Miscellaneous (1)
- Nursing (5)
- BDS (19)

On the right, there is a banner for Mahatma Gandhi University Medical Sciences & Technology (JAPUR) with a description of Moodle as a learning platform. Below the banner is a 'CALENDAR' for July 2021. The bottom of the page shows a Windows taskbar with the date 02-07-2021 and time 16:07.





Faculty training for the e-content development



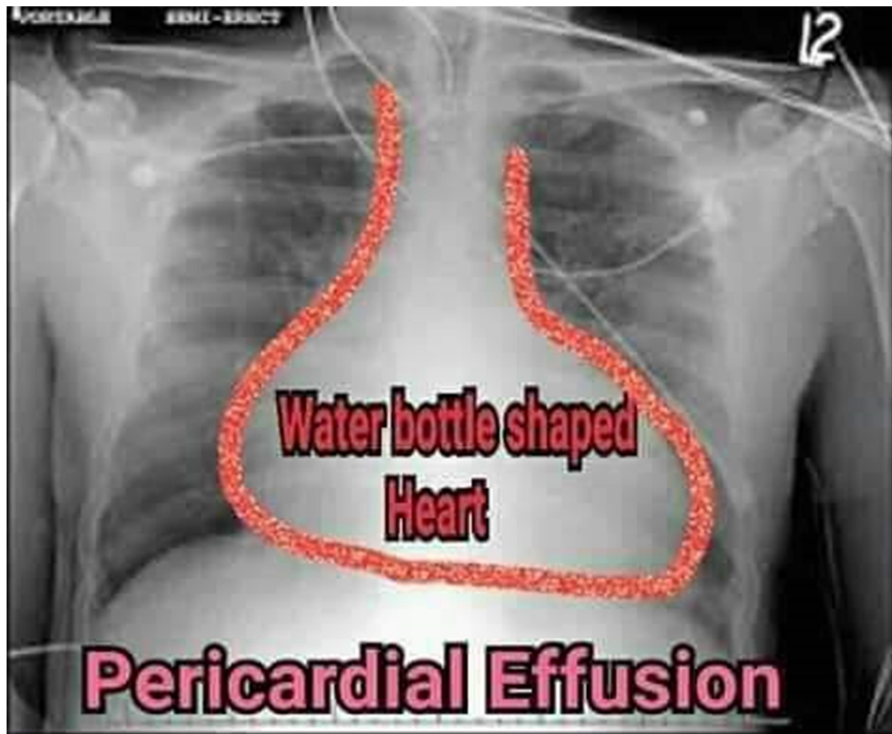
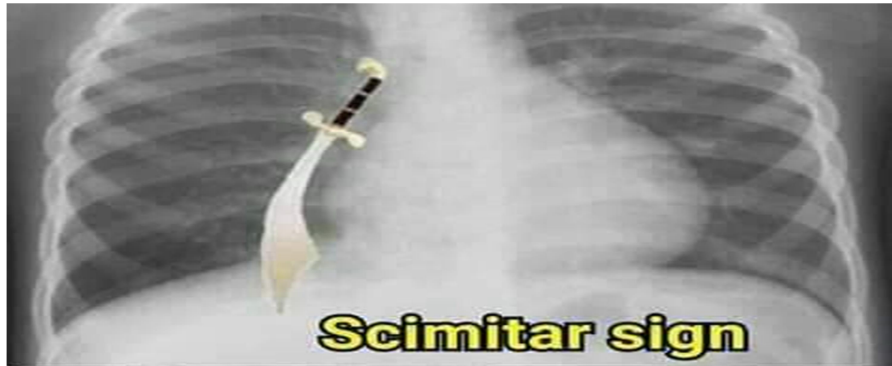
Interactive sessions



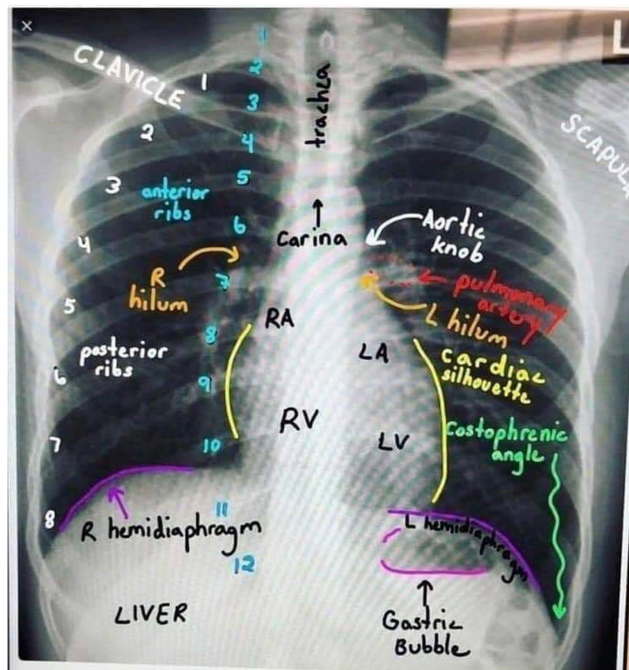
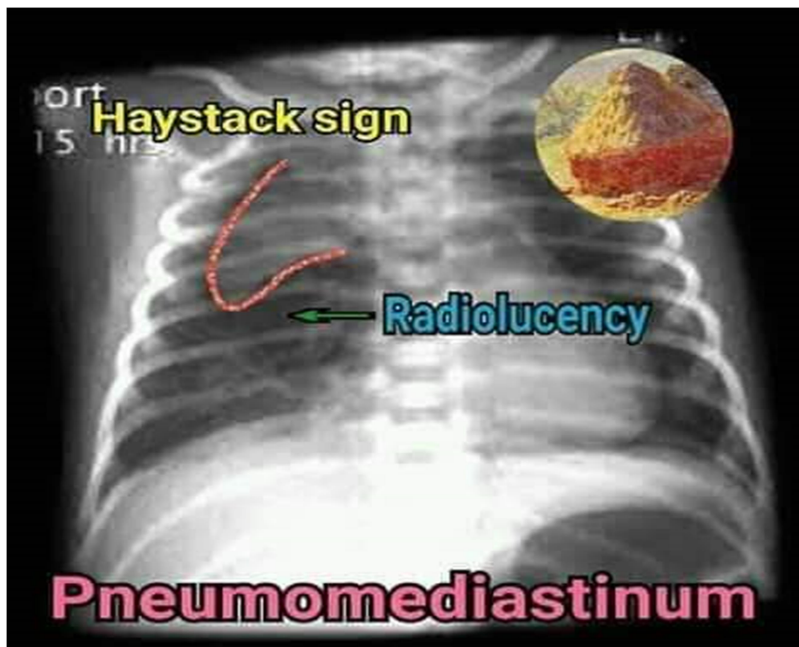
Group Discussions



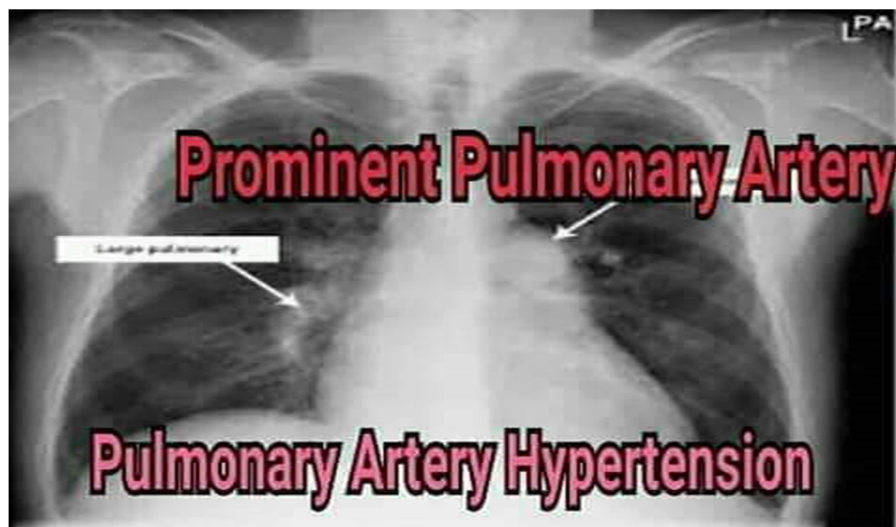
Panel Discussion on Doctor patient relationship



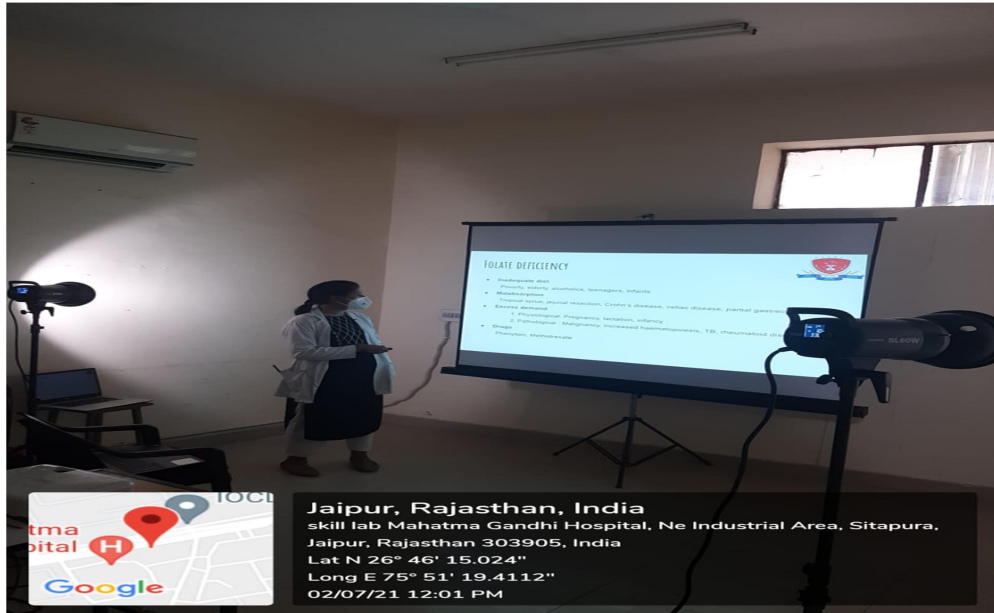
Pictorial Representation on X-rays for Effective learning
(Student -Centric Learning)



Pictorial Representation on X-rays for Effective learning
 (Student -Centric Learning)



Pictorial Representation on X-rays for Effective learning
(Student -Centric Learning)



Recording of video lectures

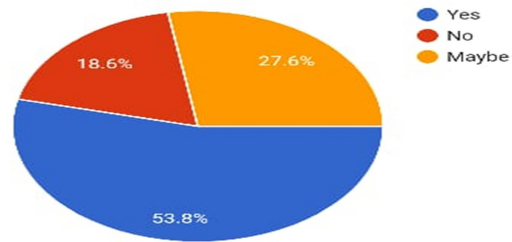


Dr. Bushra Facilitating students on e-Learning Courses for Students



Will Moodle useful in your MBBS Course?

145 responses



Overall rating of Moodle training?

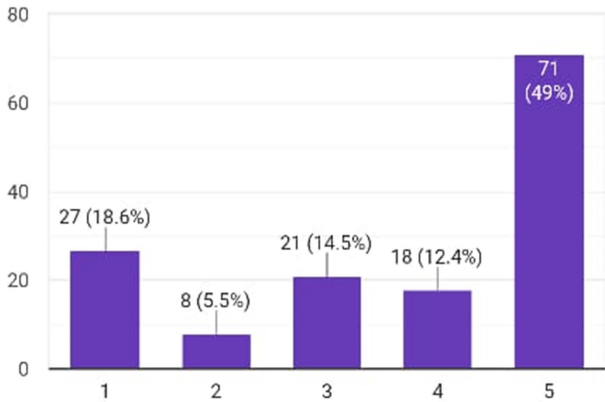
Students feedback on the Moodle Platform of MGUMST University



Was the length of training adequate?



145 responses



Navigation bar with icons for back, palette, forward, and user profile. Below the bar, a progress indicator shows '63 responses' for 'QUESTIONS' and '145' for 'RESPONSES'.

- Ya the session was nice..but the practise time on computers was not enough...
- Can be improved
- 👍👍👍👍
- Same thing is repeting
- Good
- Bohothard
- best training session ever
- Good training
- Pakao
- Wow
- Jnqm



Students feedback on the Moodle Platform of MGUMST University

QUESTIONS

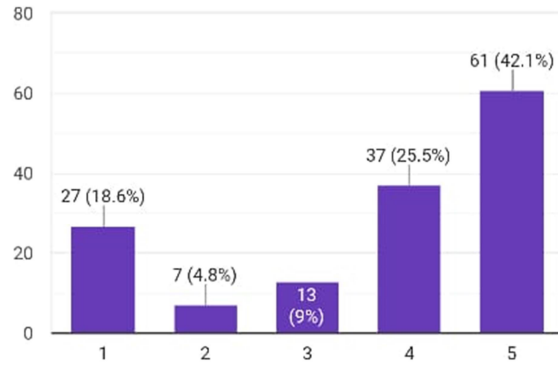
RESPONSES

145

Overall rating of Moodle training?



145 responses



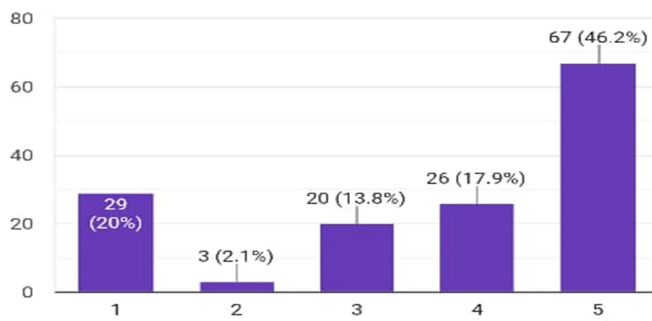
QUESTIONS

RESPONSES

145

Was the content of the training adequate?

145 responses



Students feedback on the Moodle Platform of MGUMST University

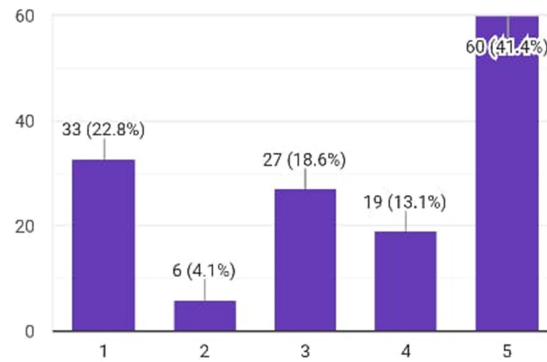
QUESTIONS

RESPONSES

145

Was the delivery modes of training adequate?

145 responses



QUESTIONS

RESPONSES

145

63 responses

It will be very helpful for us

Pen paper mode is much better!!

Pen paper mode is much better .

Hope it may help us..

GOOD

Good

Same things are repeatedwhich makes it boring sometimes

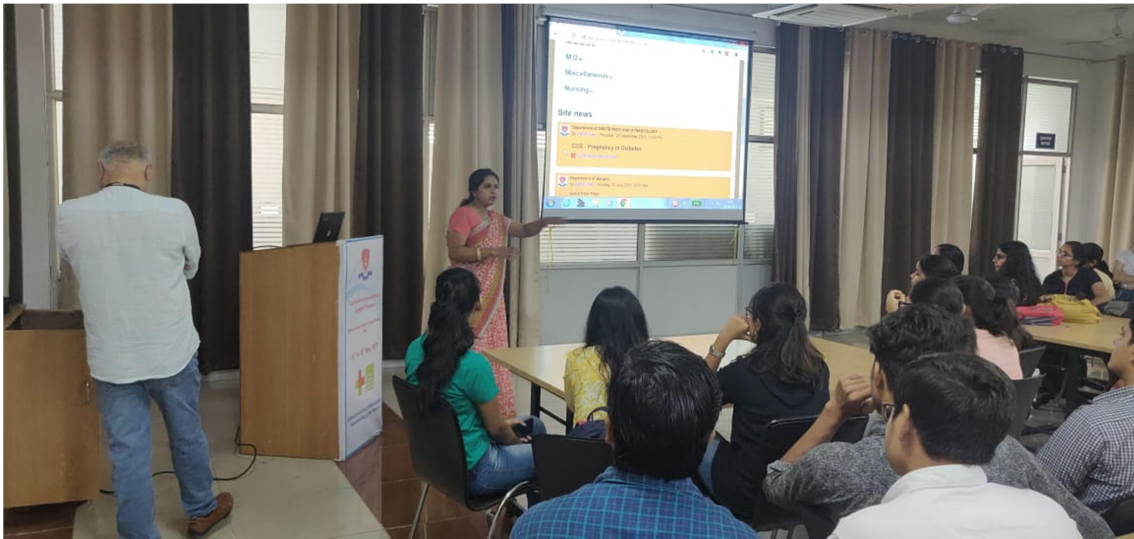
It would be very helpful

Cool

Ya the session was nice..but the practise time on computers was not enough...

Can be improved

Students feedback on the Moodle Platform of MGUMST University



Faculties delivering lecture using power point presentation

